

Pre-concentration methods for detection of pathogens in microfluidic systems

Roana de Oliveira Hansen

University of Southern Denmark
NanoSYD center

Motivation

→ Detection of pathogens:

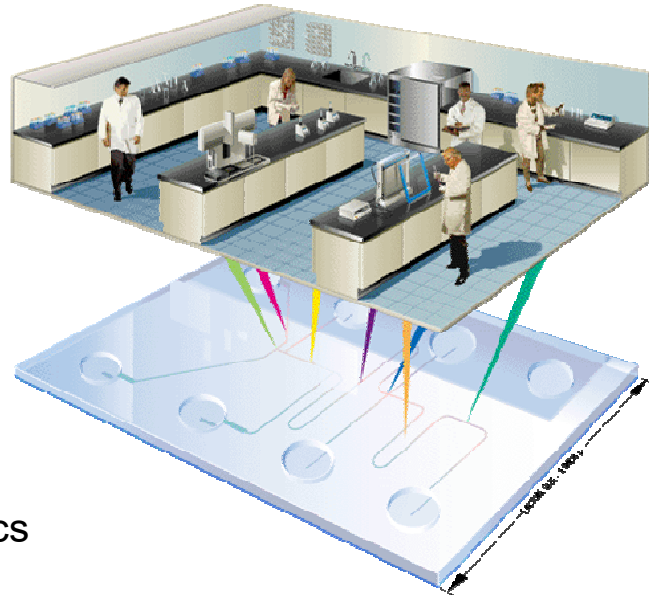
Environmental waters

Food products

Blood samples



Microfluidic solutions



→ Advantages:

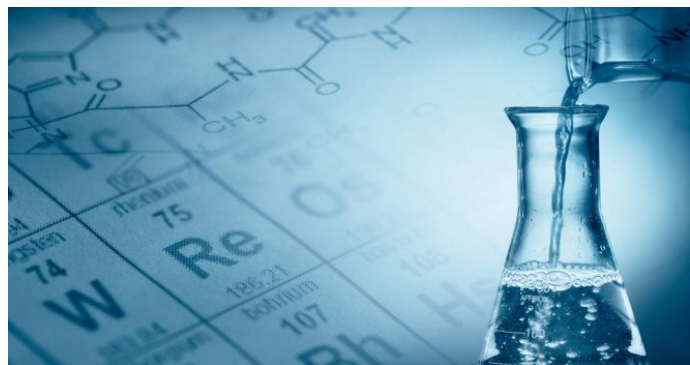
Point-of-care diagnostics

Quick

Affordable

www.gene-quantification.de

Sample pre-concentration



→ Complex composition of bulk sample:

Chamber for target enrichment is necessary for higher detection sensitivity

Sample detection

Currently used methods

- Flow cytometry
- qPCR
- UV-spectrometry

Target pathogens

→ Salmonella

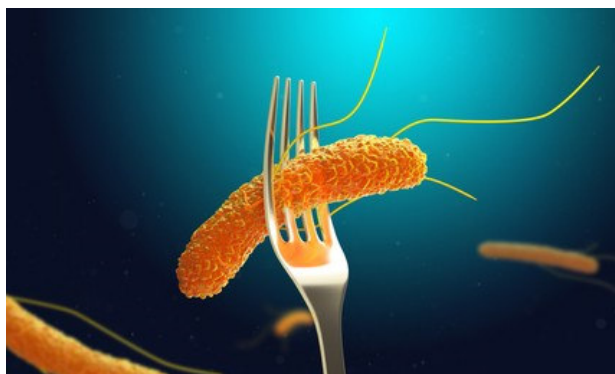


Image: shutterstock.com

→ SARS-Cov-2



Image: www.unido.org

Target pathogens

→ Human adenovirus

→ E-Coli

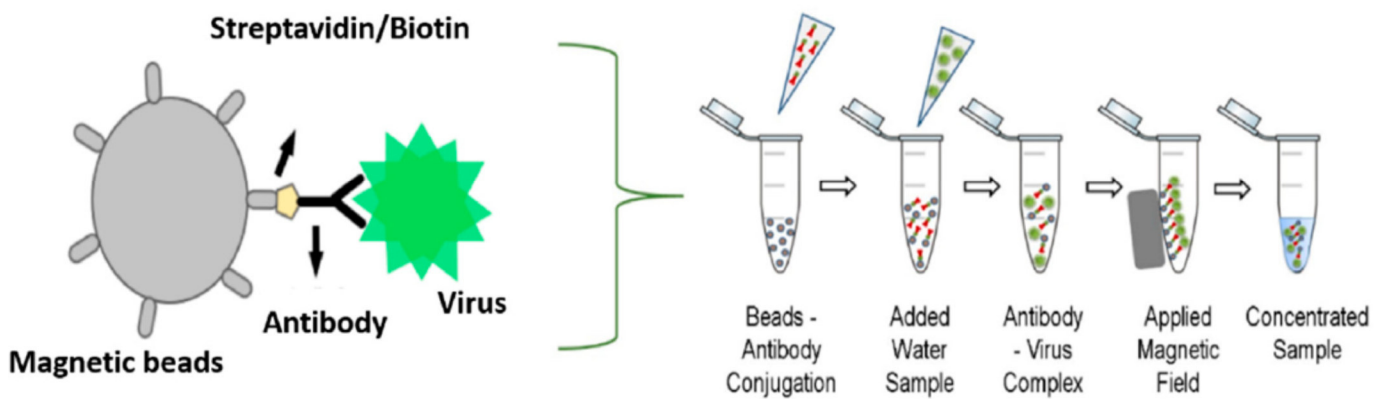


Image: www.rechargenews.com



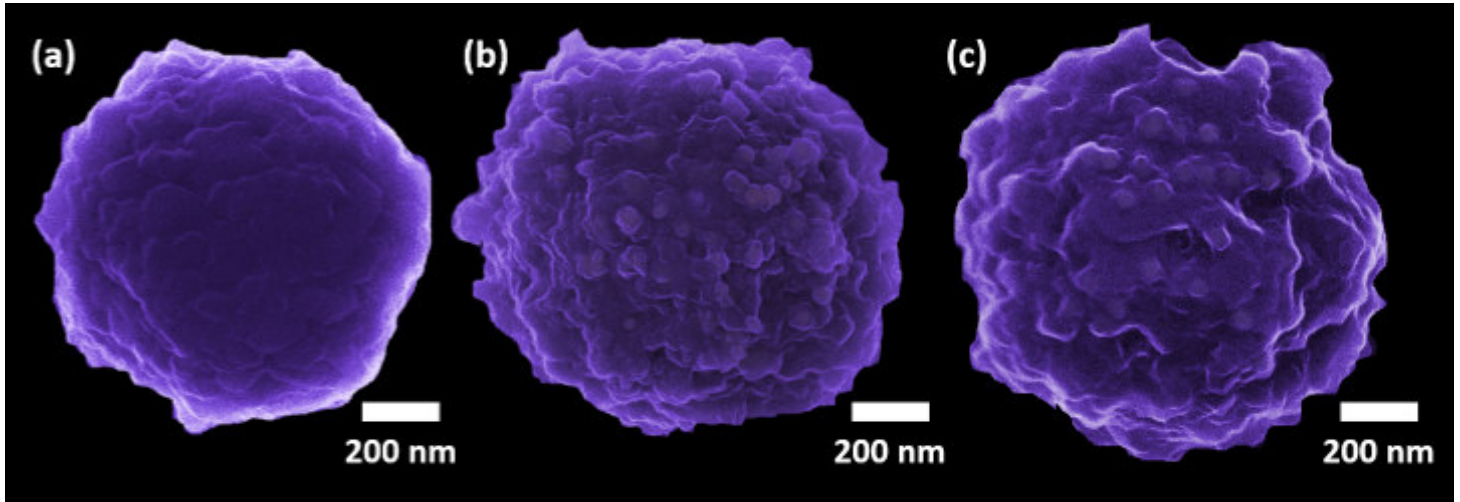
Image: savethewater.org

Immunomagnetic separation



Beads functionalization

Target: Human adenovirus



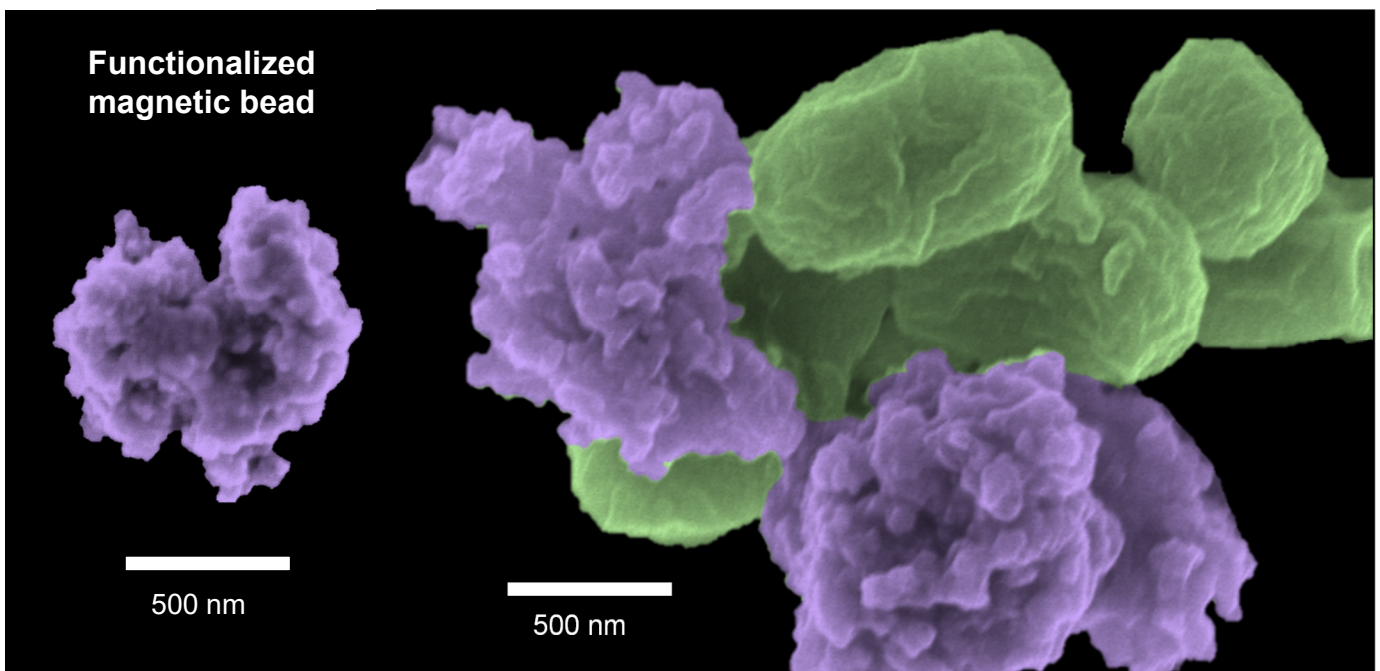
Functionalized magnetic bead

Bead exposed to wastewater

Bead exposed to control sample

Beads functionalization

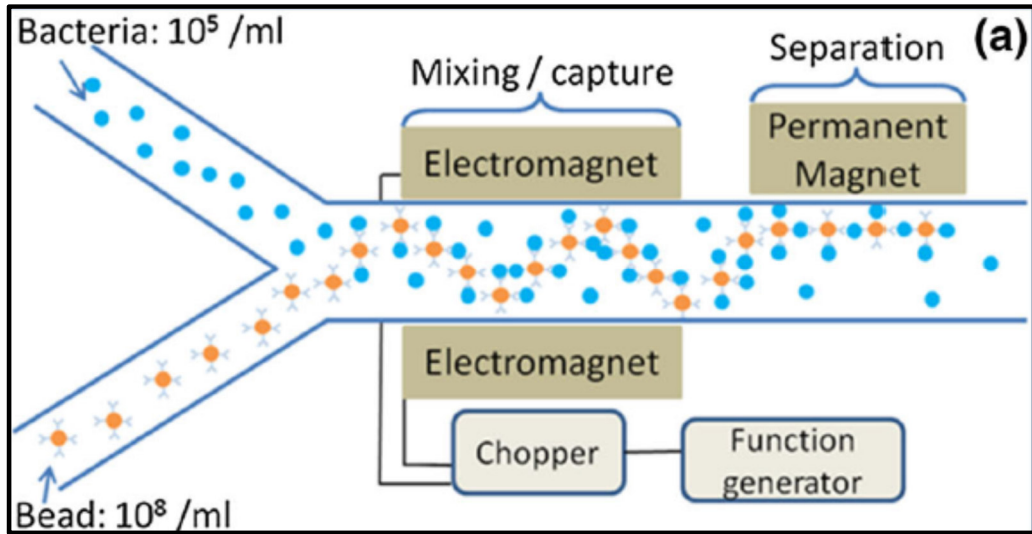
Target: E-coli bacteria



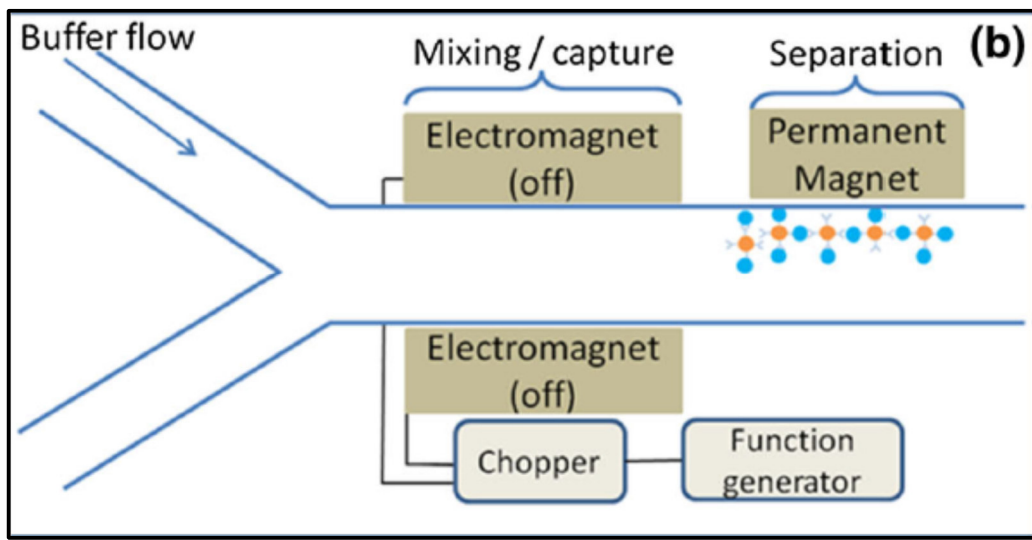
Functionalized magnetic bead

Bead exposed to control sample

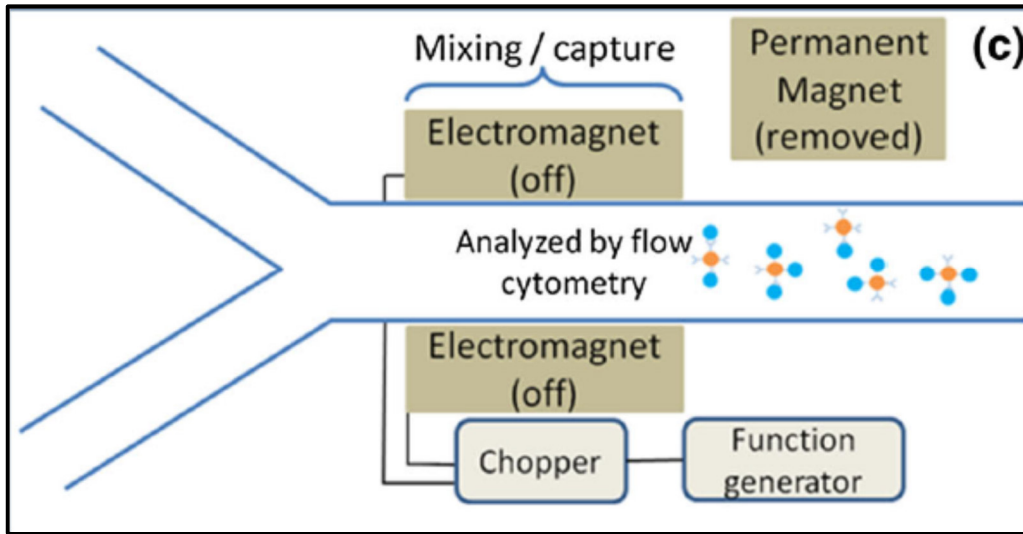
Immunomagnetic separation



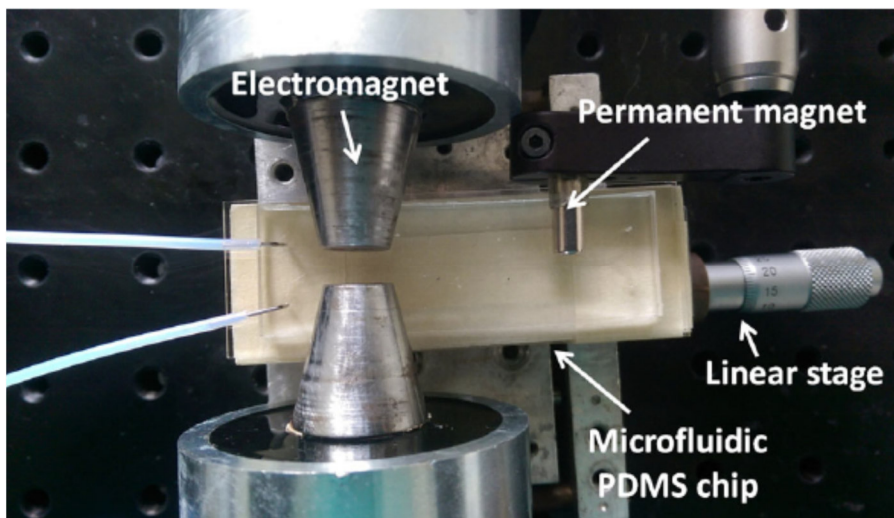
Immunomagnetic separation



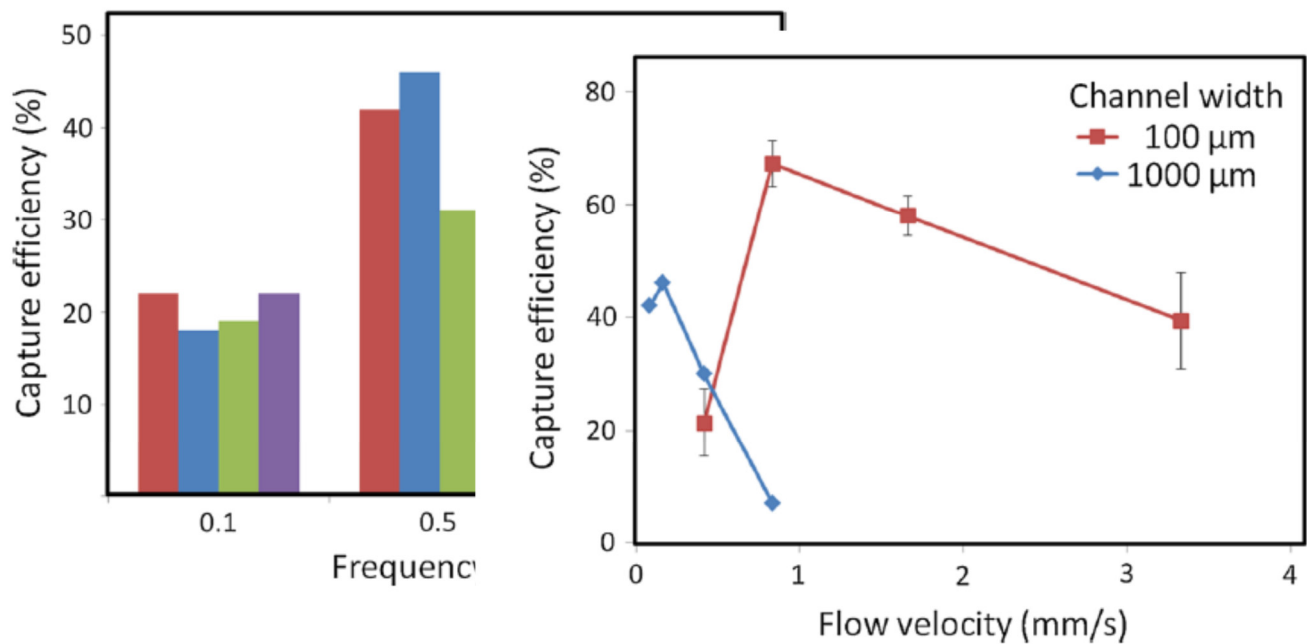
Immunomagnetic separation



Immunomagnetic separation



Immunomagnetic separation



Application to environmental waters



chemosensors



Article

Functionalized Surfaces as a Tool for Virus Sensing: A Demonstration of *Human mastadenovirus* Detection in Environmental Waters

Juliana Schons Gularte ^{1,2,*} , Roana de Oliveira Hansen ³ , Meriane Demoliner ^{1,2}, Jacek Fiutowski ³, Ana Karolina Antunes Eisen ^{1,2}, Fagner Henrique Heldt ^{1,2} , Paula Rodrigues de Almeida ^{1,2} , Daniela Müller de Quevedo ⁴, Horst-Günter Rubahn ³ and Fernando Rosado Spilki ^{1,2}

Application to environmental waters

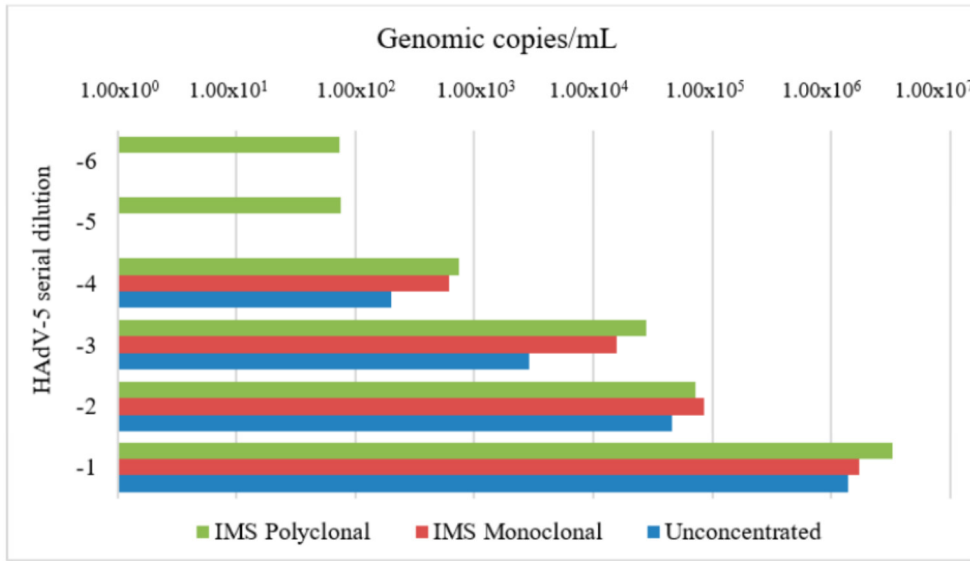


Figure 4. Averages of qPCR results to standard HAdV analyses of unconcentrated and concentrated samples by the IMS method.

Application to environmental waters

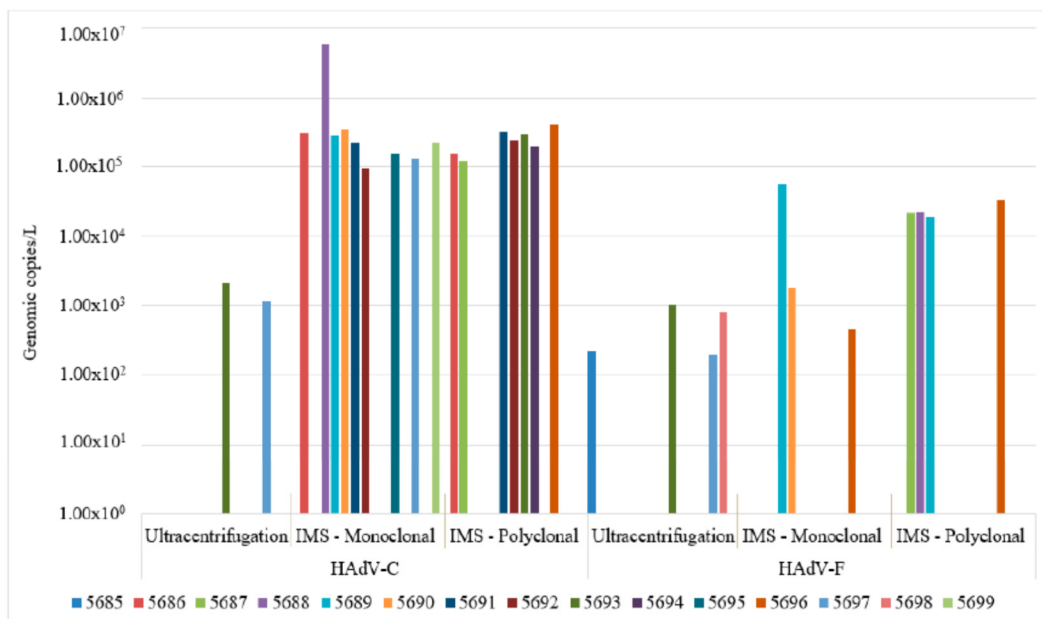


Figure 7. Results of HAdV-C and -F in water samples comparing ultracentrifugation and IMS methods detected by qPCR.

Conclusions

Immunomagnetic separation:

- Improved pre-concentration
- Suitable for environmental samples
- Compatible with several detection methods
- Suitable for lab-on-chip applications

Acknowledgements

Paanee project:

Jacek Fiutowski
Deborah Curtis
Eduardo Tannhauser
Emil Højlund-Nielsen
Arpita De
Thomas Tølbøl Sørensen
Sangita Khatri
Soumyo Mukherji
Suparna Mukherji



Innovation Fund Denmark
RESEARCH, TECHNOLOGY & GROWTH



IIT BOMBAY

Environmental water monitoring project:

Juliana Schons Gularte
Fernando Spilki

